

XQ Series Quick Exhaust Valve



The valve is generally installed on the pipeline between the cylinder and reversal valve and near the cylinder, which directly discharge the air from cylinder without passing the reversal valve and thus to achieve the goal of fast reversion of cylinder. The effect on improving cylinder speed is especially obvious.

P: Connect reversal valve export
A: Connect cylinder
R: Connect muffler

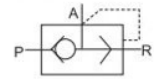
Ordering Code

XQ — **170800**

Series Code
XQ: Quick Exhaust Valve

Port Size
170600: G1/8"
170800: G1/4"
171000: G3/8"
171500: G1/2"

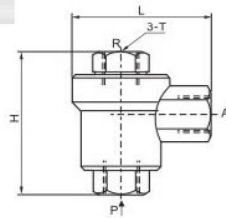
Graphic Symbol



Specification

Model	XQ170600	XQ170800	XQ171000	XQ171500
Joint Threaded	G1/8"	G1/4"	G3/8"	G1/2"
Port Size	6mm	6mm	8mm	15mm
Flow	$\geq 0.9\text{m}^3/\text{min}$	$\geq 0.9\text{m}^3/\text{min}$	$\geq 2.5\text{m}^3/\text{min}$	$\geq 4.5\text{m}^3/\text{min}$
Timerate(Ten Thousand Times)	≤ 200			
Working Pressure Range	0.12~1.0MPa			
Exchange Times(S)	≤ 0.03	≤ 0.03	≤ 0.04	≤ 0.05

Overall Dimensions



Dimension Sheet

Model	T	H	L
XQ170600	G1/8"	39	32
XQ170800	G1/4"	51	45
XQ171000	G3/8"	68	62
XQ171500	G1/2"	77	86